



CONSULTANTS



PL-300: Microsoft Power BI Data Analyst

This course will discuss the various methods and best practices that are in line with business and technical requirements for modeling, visualizing, and analyzing data with Power BI. The course will also show how to access and process data from a range of data sources including both relational and non-relational data. This course will also explore how to implement proper security standards and policies across the Power BI spectrum including datasets and groups. The course will also discuss how to manage and deploy reports and dashboards for sharing and content distribution. Finally, this course will show how to build paginated reports within the Power BI service and publish them to a workspace for inclusion within Power BI.

Module 1: Get Started with Microsoft Data Analytics

This module explores the different roles in the data space, outlines the important roles and responsibilities of a Data Analysts, and then explores the landscape of the Power BI portfolio.

Lessons

Data Analytics and Microsoft
Getting Started with Power BI

Lab : Getting Started in Power BI Desktop
Getting Started

Module 2: Prepare Data in Power BI

This module explores identifying and retrieving data from various data sources. You will also learn the options for connectivity and data storage and understand the difference and performance implications of connecting directly to data vs. importing it.

Lessons

Get data from various data sources

Lab : Getting Started in Power BI Desktop
Getting Started



Module 3:

Clean, Transform, and Load Data in Power BI

This module teaches you the process of profiling and understanding the condition of the data. They will learn how to identify anomalies, look at the size and shape of their data, and perform the proper data cleaning and transforming steps to prepare the data for loading into the model.

Lessons

- Data shaping
- Enhance the data structure
- Data Profiling

Lab: Transforming and Loading Data in Power BI Desktop
Loading Data

Module 4:

Design a Data Model in Power BI

This module teaches the fundamental concepts of designing and developing a data model for proper performance and scalability. This module will also help you understand and tackle many of the common data modeling issues, including relationships, security, and performance.

Lessons

- Introduction to data modeling
- Working with tables
- Dimensions and Hierarchies

Lab: Data Modeling in Power BI Desktop
Create Model Relationships
Configure Tables
Review the model interface
Create Quick Measures

Lab: Advanced Data Modeling in Power BI Desktop
Configure many-to-many relationships
Enforce row-level security



Module 5:

Create Model Calculations using DAX in Power BI

This module introduces you to the world of DAX and its true power for enhancing a model. You will learn about aggregations and the concepts of Measures, calculated columns and tables, and Time Intelligence functions to solve calculation and data analysis problems..

Lessons

- Introduction to DAX
- DAX context
- Advanced DAX

Lab : Advanced DAX in Power BI Desktop
Use the CALCULATE() function to manipulate filter context
Use Time Intelligence functions

Lab : Introduction to DAX in Power BI Desktop
Create calculated tables
Create calculated columns
Create measures

Module 6:

Optimize Model Performance in Power BI

This In this module you are introduced to steps, processes, concepts, and data modeling best practices necessary to optimize a data model for enterprise-level performance.

Lessons

- Optimize the model for performance
- Optimize DirectQuery Models
- Create and manage Aggregations



Module 7:

Create Reports in Power BI

This module introduces you to the fundamental concepts and principles of designing and building a report, including selecting the correct visuals, designing a page layout, and applying basic but critical functionality. The important topic of designing for accessibility is also covered.

Lessons

- Design a report
- Enhance the report

Lab: Designing a report in Power BI Desktop

- Create a live connection in Power BI Desktop
- Design a report
- Configure visual fields and format properties

Lab: Enhancing reports with interaction and formatting in Power BI Desktop

- Create and configure Sync Slicers
- Create a drillthrough page
- Apply conditional formatting
- Create and use Bookmarksmeasures

Module 8:

Create Dashboards in Power BI

In this module you will learn how to tell a compelling story through the use of dashboards and the different navigation tools available to provide navigation. You will be introduced to features and functionality and how to enhance dashboards for usability and insights.

Lessons

- Create a Dashboard
- Real-time Dashboards
- Enhance a Dashboard

Lab: Creating a Dashboard in Power BI Service

- Create a Dashboard
- Pin visuals to a Dashboard
- Configure a Dashboard tile alert
- Use Q&A to create a dashboard tile



Module 9:

Enhance reports for usability and storytelling in Power BI

This module will teach you about paginated reports, including what they are how they fit into Power BI. You will then learn how to build and publish a report.

Lessons

Paginated report overview
Create Paginated reports

Lab : Creating a Paginated report in Power BI Desktop

Use Power BI Report Builder
Design a multi-page report layout
Define a data source
Define a dataset
Create a report parameter
Export a report to PDF

Module 10:

Perform Advanced Analytics in Power BI

This module helps you apply additional features to enhance the report for analytical insights in the data, equipping you with the steps to use the report for actual data analysis. You will also perform advanced analytics using AI visuals on the report for even deeper and meaningful data insights..

Lessons

Advanced Analytics
Data Insights through AI visuals.

Lab : Data Analysis in Power BI Desktop

Create animated scatter charts
Use the visual to forecast values
Work with Decomposition Tree visual
Work with the Key Influencers visual



Module 11:

Manage Datasets in Power BI

In this module you will learn the concepts of managing Power BI assets, including datasets and workspaces. You will also publish datasets to the Power BI service, then refresh and secure them.

Lessons

- Parameters
- Datasets
- Security in Power BI

Module 12:

Create and Manage Workspaces in Power BI

This module will introduce you to Workspaces, including how to create and manage them. You will also learn how to share content, including reports and dashboards, and then learn how to distribute an App.

Lessons

- Creating Workspaces
- Sharing and Managing Assets

Lab : Creating Workspaces
Sharing and Managing Assets
Lab : Publishing and Sharing Power BI Content
Map security principals to dataset roles
Share a dashboard
Publish an App

PL300 ONLINE





CONSULTANTS

Who are we

WI Consultants aims to be a leading business consultation provider across MENA. We offer a wide range of financial advisory, accountancy, and training services with the focus on the concepts of making-an-impact and value-for-money. We provide our clients with customized high-quality deliverables driven by our team's functional expertise across industries and their enthusiasm for adding value and going the extra mile. With the fast, dynamic market and shifts in industries, we believe all businesses need a solid base to make sound decisions. We also believe that every business deserves a chance to succeed and excel in their field, which is why we offer our service to all business sectors and sizes. Our priority goes to our clients and team.

Our Services

Financial Accounting Advisory Services

- ☑ Business Plans
- ☑ Valuation
- ☑ Feasibility Studies
- ☑ Financial Modeling
- ☑ Financial Analysis

Accountancy and Reporting

- ☑ IFRS consultation services
- ☑ Bookkeeping
- ☑ VAT and Tax Services
- ☑ Financial Statement preparation
- ☑ Budgeting and Performance Reporting

Recruitment Consultations

- ☑ Specialized Finance
- ☑ Ready-to-Recruit service
- ☑ Finance and Accounting
- ☑ Technical Interview services

Business Intelligence

- ☑ Dashboards
- ☑ Data Analytics
- ☑ Data Warehousing
- ☑ Technical Consultations

Training

- ☑ On-site training
- ☑ Online training
- ☑ Subscription-based training
- ☑ Company-specific training programs

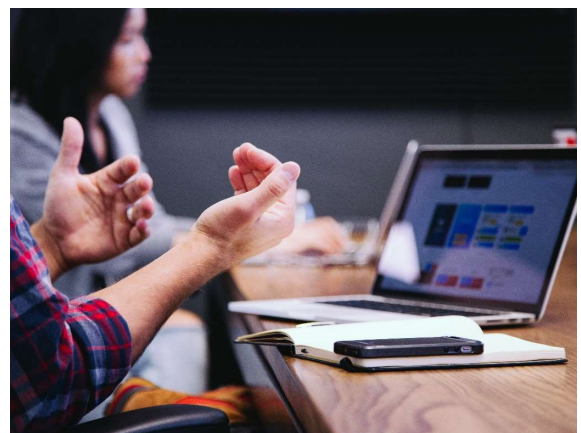


Why us

We believe that sustainable business growth starts with a carefully selected strategic partnership. Our expertise and business know-how have contributed to the development of high-performance level and optimized business flow

WI has designed its services to help clients align their strategic objectives with day-to-day operations

We are passionate about sharing success stories with our clients and we put our client's needs first. Our services are highly customizable to be best fit for our clients. We also have a dedicated service line for zero-budget clients which helps entrepreneurs in chasing their dreams.



Our Team



Waseem Shadid
Partner

Waseem has a track record as a successful professional Finance Director and Advisor experienced in analyzing financial data, developing business plans, making recommendations to improve business performance, financial risk, finding ways to optimize costs, studying financial legislation and leading M&A transactions

Waseem has a history of providing consistent leadership in the financial areas of a business with a strong background in focusing on profitability and being able to identify trends affecting financial performance and he is well-positioned to exceed expectations.



Ibrahim Zahran
Partner

Ibrahim is a multifaceted Certified Professional holding the ACCA, CMA, FMVA, and CertIFR with multiple recognition prizes and a proven track record in helping businesses at start-up, IPO, and post-listing stages. Offering over a decade of experience working with business partners and senior executives as a key advisor, creative problem solver, and result-driven financial professional.

Ibrahim has a passion for adding value and going the extra mile. Recognized for strong financial planning and diving in details and making operational tweaks, Ibrahim is bound to make a favorable impact on the client's business.

Mahmoud Rahhal



Course will be delivered by Mahmoud Rahhal who is a Business Intelligence Architect with over a decade of experience in analysis, design, architect, and implementation of solutions for Power BI, SharePoint, Office 365, Azure, SQL Server.

Mahmoud has a passion for working with Data and bringing value to the business and is in managing the development effort, delivery of the projects.

Mahmoud is a Microsoft Certified Trainer (MCT) with a proven track record in providing consultations and training programs across the Middle East for several types of businesses.

Mahmoud has the following professional Certificates:



Ayman Hasan

Training and Risk Management

Ayman is a financial auditor, an advisor and a professional trainer with 20 plus years of experience in financial auditing, accounting advisory, and professional training. He gained his experience while he was working at global firms, namely, Arthur Andersen LLP, EY, and PwC. In addition to delivering various public and in-house training programs to delegates from many organizations around the Middle East and USA, he delivers exam-based training courses to candidates pursuing professional designations such CPA, CMA, CIA, and Diploma in IFRS. Ayman is a certified trainer and public speaker specialized in accounting and financial related subjects

Ayman has the following qualifications:

CPA - CMA - CFM - CSCA - CIA - CRMA - IAP - CFE - CISA - CQA - DipIFR - CertIFR - CertIA - IPSAS

Our team has worked with:



Contact us:

Email: info@wi-consultants.com

Phone: +962 780145724

+966 564788243

+966 594006788

Website: www.wi-consultants.com